



U.S. AIR FORCE

AF Hearing Conservation Program: AFOSH STD 48-20



Capt Catherine Wynn
Chief, Hearing Conservation Education

OVERVIEW



-
- ✦ **HCP REVIEW AND PROCEDURES**
 - ✦ **AF AUDIOLOGIST**
 - ✦ **DUTIES**
 - ✦ **EVAL REQUIREMENTS**
 - ✦ **HCPM RESPONSIBILITIES**
 - ✦ **FITNESS AND RISK ASSESSMENTS**
 - ✦ **HSI**

Hearing Conservation Program Overview



Overview of HCP

- ✦ **Goal – Prevent occupationally related hearing loss**
 - ✦ BES - Identify / quantify potential sources of noise exposure and noise exposed personnel
 - ✦ BES - Control employee exposure to HazNoise with engineering controls, administrative controls, and/or PPE
 - ✦ PH - Use monitoring audiometry to identify changes in hearing and target intervention strategies
 - ✦ PH - Educate/motivate worker to prevent hearing loss
 - ✦ PH - Fit recommended hearing protection devices



Hearing Conservation Program Overview



Directives

- ✦ 29 CFR 1910.95 (OSHA)
- ✦ DoDI 6055.12, 5 Mar 04
- ✦ AFOSH Std 48-20, Occupational Noise and Hearing Conservation Program, 30 Jun 06

All personnel & aircrew members routinely exposed to hazardous noise are covered



Hearing Conservation Program Overview



Initial Visit

- ✧ Public Health / FHM
 - ✧ Audiometric Case History, Form 1753, Sec I
 - ✧ Educate / Motivate
 - ✧ Hearing Protection Fitting
 - ✧ Monitoring Audiometry – Establish baseline (DD2215)
 - ✧ Certified Occupational Hearing Conservationist
 - ✧ Noise free, no ENT problems
 - ✧ Purpose – Use for comparison of future tests



Hearing Conservation Program Overview



Annually

- ✧ PH / FHM

- ✧ Audiogram, DD2216

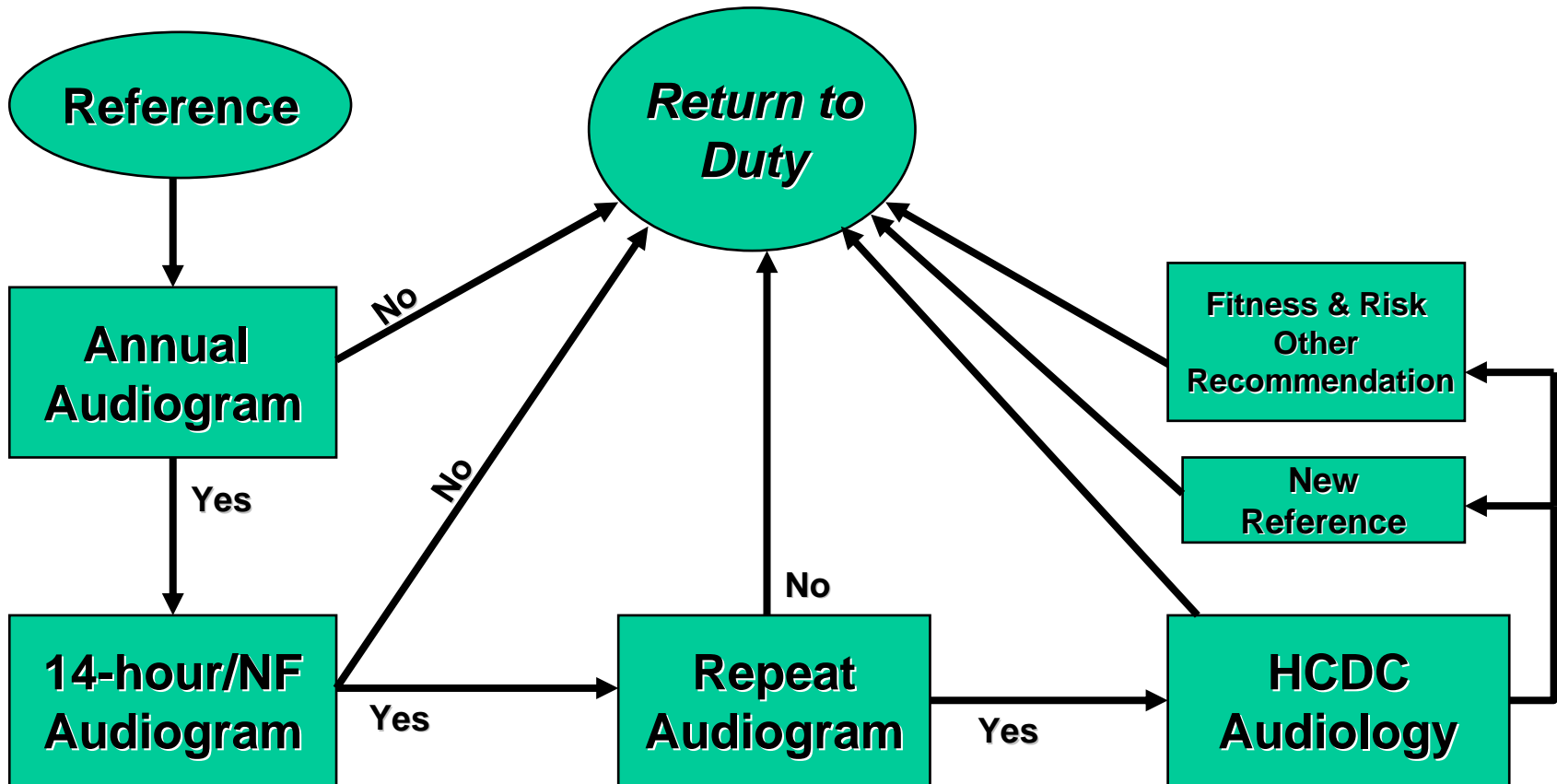
- Purpose - Identify changes in hearing levels due to noise exposure in order to implement intervention

- ✧ Check HPD Fit

- ✧ Supervisors

- ✧ Brief Workers

Hearing Conservation Program Overview



HCP Monitoring Flow Chart

HCDC/HCC AUDIOLOGIST



- ✦ Review PTS's to see if further F/U is required
- ✦ Review civilian/sister service evals
- ✦ Eval Requirements:
 1. Puretone AC, headphones, pulsed tones .250-8k Hz (include 3&6 k Hz)
 2. Puretone BC, pulse tones .5-4k Hz (include 3k Hz)
 3. Word Rec, headphones, tape/CD, presented at 70 dBHL
 4. Immittance: tympanometry, Acoustic Reflex (ipsi/contra), Decay 500-1000 Hz if clinically warranted.
 5. OAE'S.



HCDC/HCC AUDIOLOGIST



- ✧ Will provide to the referring provider:
 - ✧ Completed referral form
 - ✧ Audiometric test results
 - ✧ Patient disposition: including reference audiogram re-establishment, return to duty or restrictions, and follow up required.

- ✧ AF audiologist should review/consult on all audiometric evaluations performed by non-AF audiologists.



HCPM MANAGEMENT RESPONSIBILITIES



- ✧ Ensure procedures are established to identify, schedule, and monitor all personnel on the HCP.
- ✧ Review HCP for adequacy/appropriateness to protect workers from hazardous noise. Include adequacy of education, audiogram completion rates, and adverse hearing loss trends in relationship to workplaces/AFSC's/HPD usage, etc.
- ✧ Ensure only audiometers meeting ANSI standards are used in the HCP.

Note: the OHWG is the proper forum to evaluate program and address concerns.



HCPM MANAGEMENT RESPONSIBILITIES



- ✧ Trend and analyze HL compensation data and DOEHRS-HC reports; provide consultation to the OHWG.
- ✧ Conduct hearing related Fit/Risk evaluations and send copies of evaluations to MAJCOM, DRU, or FOA SG for review by the designated hearing conservation consultant.
- ✧ Analyze claims submitted for HL under the Department of Labor's OWCP. Assess the claim and advise the injury compensation specialist if the claim should be disputed.
- ✧ Ensure the most current version of DOEHRS-HC is used, and technicians are adequately trained on the program.



Fitness and Risk Evaluations

AFOSH Std 48-20



Personnel who cannot perform essential job functions, and/or pose a safety risk to themselves or others, because of a medical condition, will be evaluated for fitness and risk.

The fitness and risk evaluation may be requested by the medical provider or by line management. Personnel should be considered for a fitness and risk evaluation when they:

Hearing Conservation Program Overview



Fit and Risk Assessment

- ✧ Second PTS in same ear
- ✧ Exceed H-1 profile on initial/pre-placement
- ✧ Complaint of not hearing/understanding
- ✧ Invalid/unreliable audiogram
- ✧ Exhibit behaviors that call into direct question the ability to work in the assigned job
- ✧ Cannot be fit with standard HPD's.

The appointing official/commander makes final decision.

-
- ✦ Clinical evaluation by either HCDC/HCC, or a licensed or certified civilian audiologist is required as a part of the fitness and risk evaluation when a worker has:
 - ✦ A second PTS in the same ear
 - ✦ Suspected conductive pathology
 - ✦ Invalid or unreliable audiometric test results

2008 HCP HSI Items

IG.2.1.3 HCP

- ✧ HCP data was reviewed regularly by the OHWG and/or AMC meeting
- ✧ All PTS or problem audiograms reviewed/evaluated by FS, OccMed Phys, or Audiologist to determine further F/U
 - ✧ If no F/U, clinical reasoning is documented
 - ✧ Civ/DoD referrals comparable to AF HCDC evals
 - ✧ Evals sufficient to r/o CHL or RCHL
 - ✧ A sample of non-HCDC evals was peer reviewed

2008 HCP HSI Items

IG.2.1.3 HCP

- ✧ **AF Fm 1753 at initial audio and with PTS**
 - ✧ Develop and use Std Fm 600 overprint
- ✧ **Reference audiograms only reset upon the direction / concurrence of FS, OccMed Phy, or Audiologist**
 - ✧ Better training and oversight of OHC's
- ✧ **Trained and certified technicians performed tests**
 - ✧ SGP oversight

QUESTIONS?



Team Aerospace Begins Here!

REVIEW



-
- ✦ **HCP REVIEW AND PROCEDURES**
 - ✦ **AF AUDIOLOGIST**
 - ✦ **DUTIES**
 - ✦ **EVAL REQUIREMENTS**
 - ✦ **HCPM RESPONSIBILITIES**
 - ✦ **FITNESS AND RISK ASSESSMENTS**
 - ✦ **HSI**