

Attention allocation with approaching auditory events

Marjorie A.M. Grantham

LTC, U.S. Army

Vanderbilt University Dissertation Research



Research questions

Q1. What are the spatial processing effects of adding a competing event to an approaching sound source?

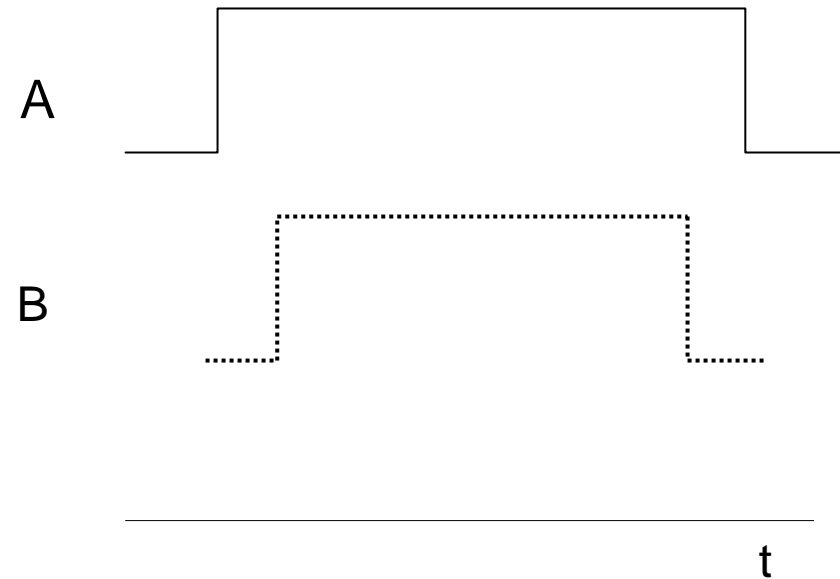
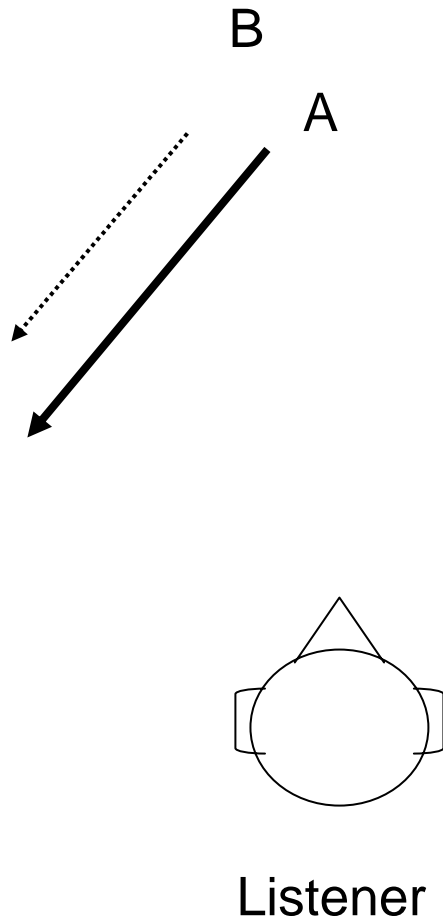
Q2. What are the effects when a competing event is stationary vs. moving?

Q3. What are the effects when the primary and competing events come from the same direction?

Q4. What are the effects when portions of the competing event temporally overlap the primary event?

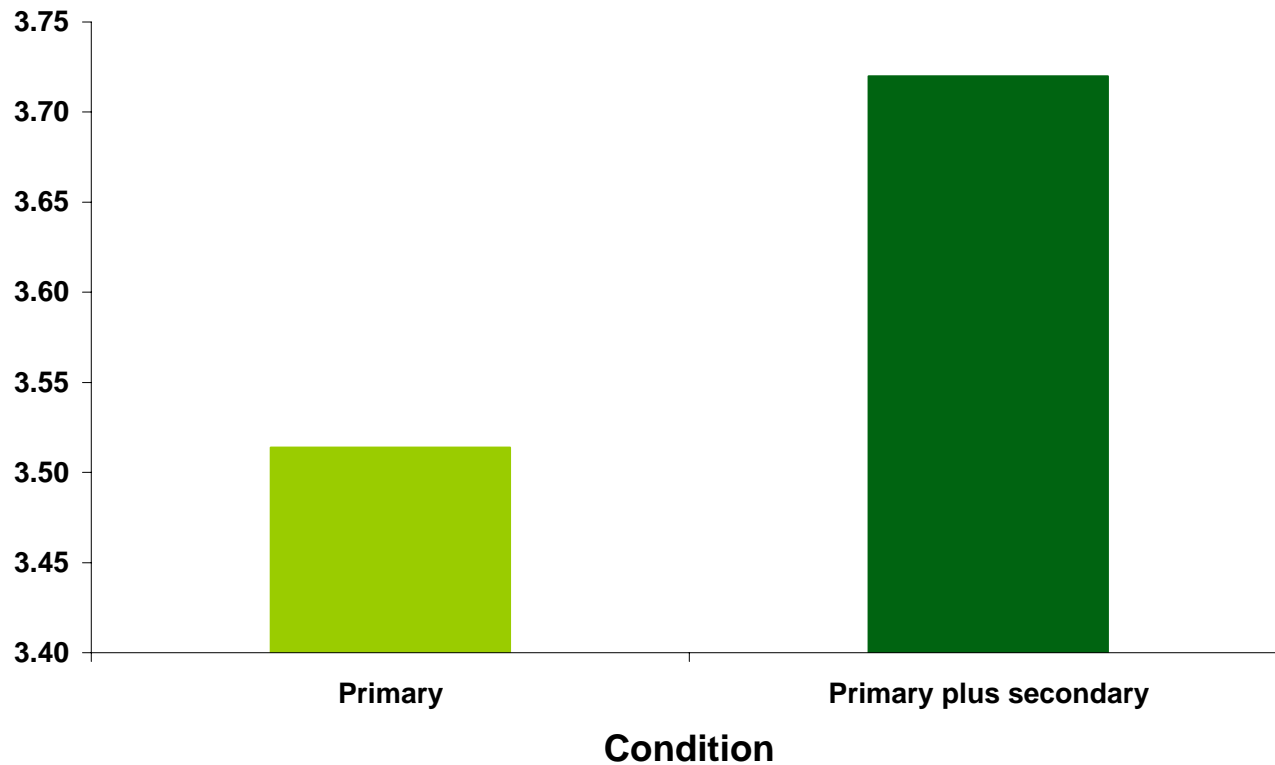


Q1. What are the effects of adding a competing event to an approaching sound source?



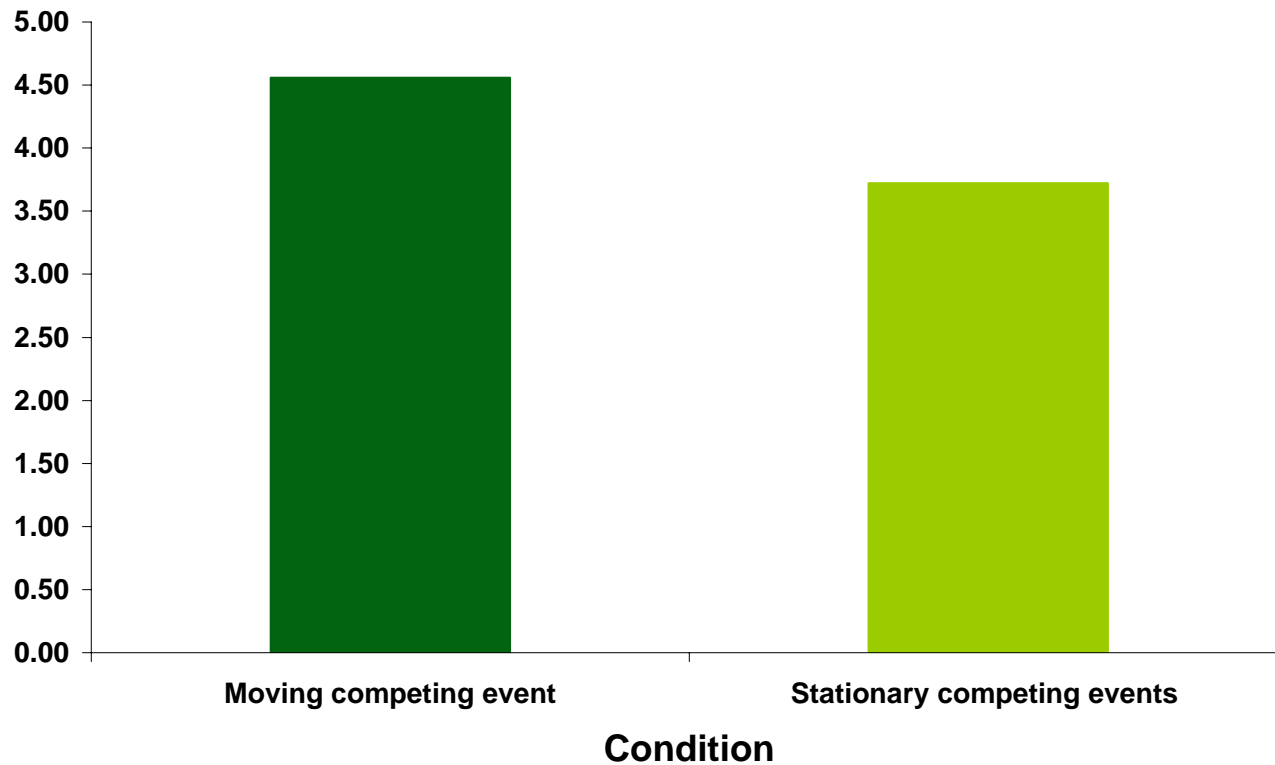
Q1. What are the effects of adding a competing event to an approaching sound source?

Primary vs. Primary plus secondary



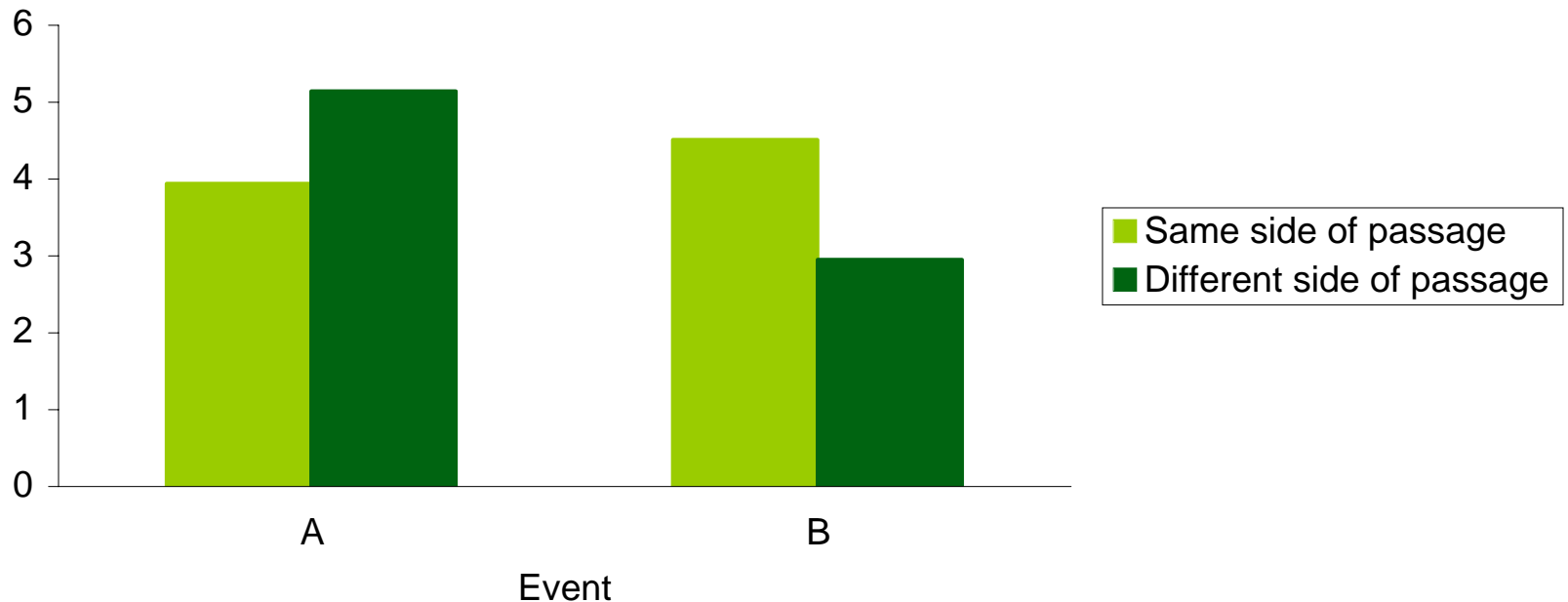
Q2. What are the effects when the competing event is stationary vs. moving?

Stationary vs. Moving competing events



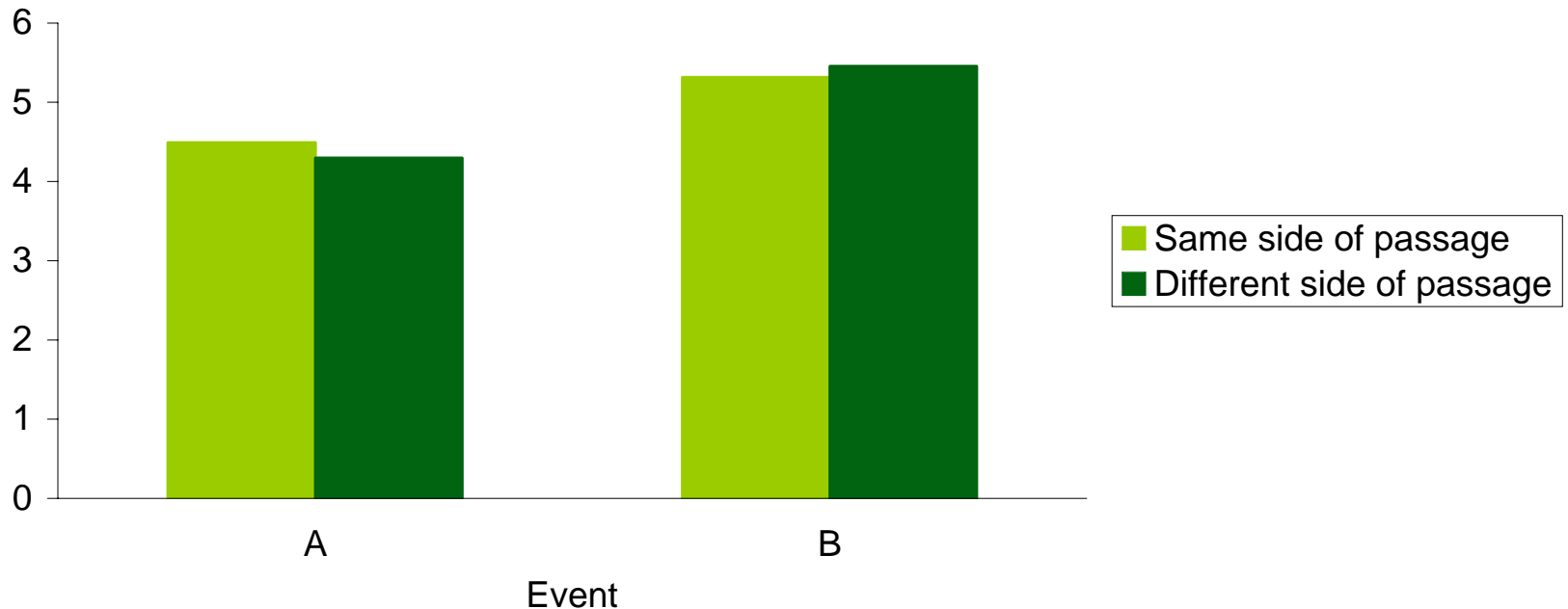
Q3. What are the effects when the primary and competing events come from the same direction?

Condition 6 (A, B same initial direction)



Q3. What are the effects when the primary and competing events travel in the same direction?

Condition 7 (A, B different initial directions)

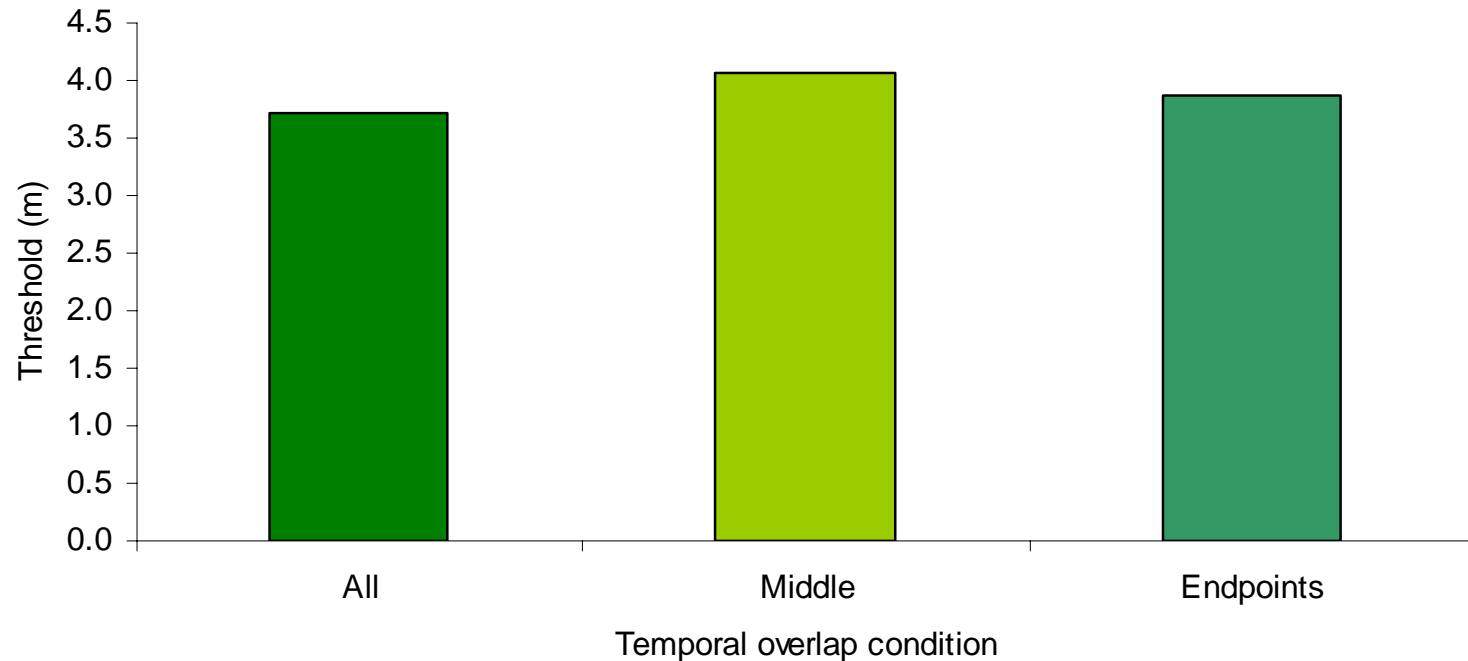


Q4. What are the effects when portions of the competing event temporally overlap the primary event?

Condition	Description	Temporal Overlap Graphic
1	A only	_____
2	B covers only middle of A	_____ -----
3	B covers all A	_____ -----
4	B covers all A, B ignored	_____ -----
5	B covers only A endpoints	_____ -----
6s	A & B same initial direction; same miss side	_____ -----
6d	A & B same initial direction; different miss side	_____ -----
7s	A & B different initial direction; same miss side	_____ -----
7d	A & B different initial direction; different miss side	_____ -----
8	Two stationary B sounds cover most of A	_____

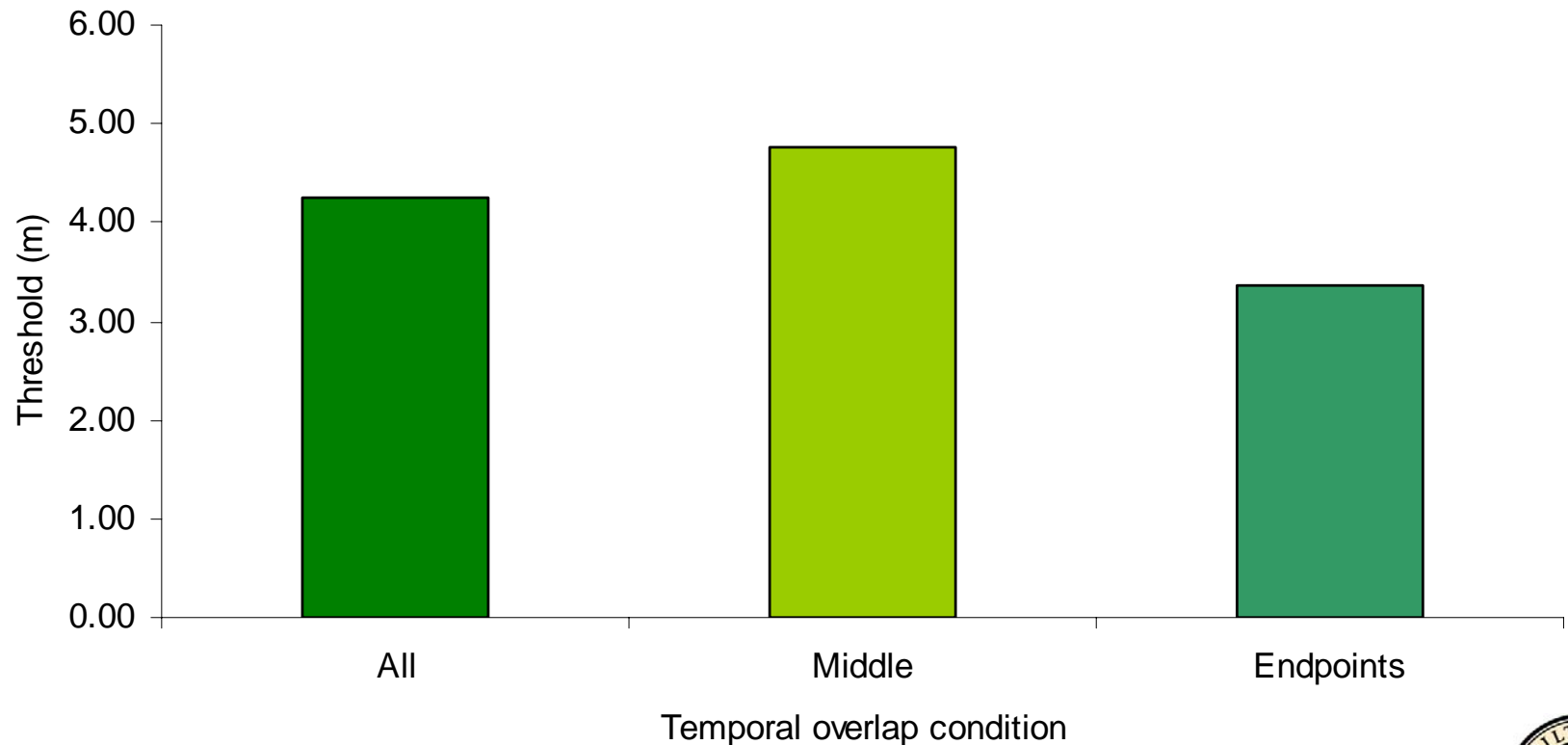
Q4. What are the effects when portions of the competing event temporally overlap the primary event?

Comparison of A thresholds with B event temporal overlap of event A



Q4. What are the effects when portions of the competing event temporally overlap the primary event?

Comparison of B thresholds with B event temporal overlap of A event



Questions?

